

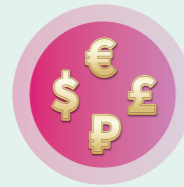


長者院舍照顧服務券計劃
Residential Care Service Voucher Scheme for the Elderly

Features of the Residential Care Service Voucher (RCSV) Scheme for the Elderly

01 Money-following-the-user

Provide elderly persons with greater flexibility to freely choose and switch among residential care homes for the elderly (RCHEs) under the Scheme.



02 Users pay in accordance with affordability

Allow elderly persons who can afford less to receive more subsidies from the Government.

03 Shortened waiting time

Elderly persons can receive subsidised residential care services (RCS) in a shorter period of time.



04 Six-month trial period

Elderly persons can try to adapt to life in RCHEs.

Eligibility Criteria

All elderly persons who have been assessed and **recommended for RCS** under Social Welfare Department's (SWD) Standardised Care Need Assessment Mechanism for Elderly Services and are waitlisted for **care-and-attention places** on the Central Waiting List (CWL) for Subsidised Long Term Care (LTC) Services.



Recognised Service Providers (RSPs)

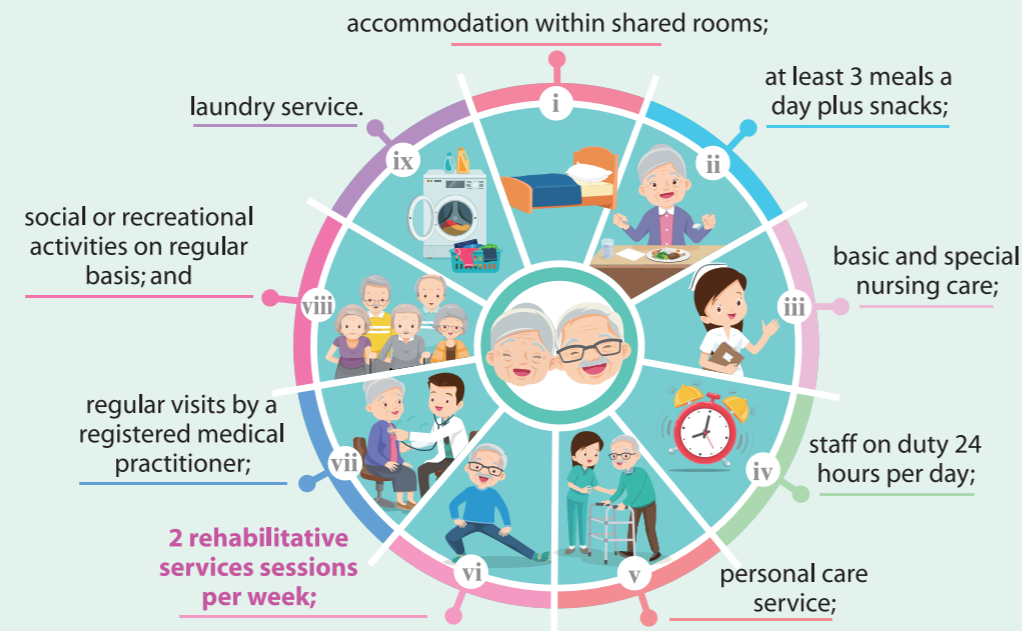
- RSPs (RCHEs participating in the Scheme) must be providing non-subsidised places and have to meet the requirements specified by SWD on space standard, staffing and track record.
- Currently there are different types of RSPs, including subvented homes, contract homes, self-financing homes run by non-governmental organisations, Category EA1 homes under the Enhanced Bought Place Scheme and other eligible private RCHEs.



SWD Elderly Information Website at www.elderlyinfo.swd.gov.hk

Scope of Service

RSPs provide individual voucher holders with a "standard service package" covered by the voucher value as follows –



Top-up Payment (Optional)

Voucher holders may make a top-up payment of up to 150% of the prevailing voucher value to **purchase enhanced or value-added services** (including single/double-room dormitory, additional physiotherapy/occupational therapy sessions and acupuncture, etc.) from RSPs.

Co-payment Arrangement

RCSV applicants are subject to an **individual means test** that takes into account their financial condition, in order to determine their co-payment level. A sliding scale of co-payment at 8 levels is shown below –

User co-payment percentage of voucher value								
Level	0	1	2	3	4	5	6	7
Percentage	0%	10%	20%	30%	40%	50%	62.5%	75%

- RCSV applicants who choose not to take the means test will pay the highest co-payment amount (Level 7).
- RCSV users may still receive Social Security Allowance, including Old Age Living Allowance/Old Age Allowance/Normal Disability Allowance, subject to their eligibility under the respective schemes.

How to Apply

- SWD will send letters to invite eligible elderly persons who are newly registered on the CWL to apply for RCSVs.
- Eligible elderly persons can download the application form from SWD's website.
- Please submit the completed application form together with supporting documents to Residential Care Service Voucher Office of SWD at Rooms 2701-07, 27/F, Two Chinachem Exchange Square, 338 King's Road, North Point, Hong Kong (Exit B1, North Point MTR Station / Exit B, Fortress Hill MTR Station) by post or in person.

Enquiry

- Residential Care Service Voucher Office of SWD** (Telephone: 3107 3280/3107 3290) (9:30 am to 1:00 pm and 2:30 pm to 5:00 pm on Monday to Friday, except public holidays)
- Responsible workers of elderly persons' LTC services
- For details and latest information on the Scheme, please visit



SWD website at www.swd.gov.hk and download application form

Social Welfare Department
Printed in April 2023



長者院舍照顧服務券計劃 Residential Care Service Voucher Scheme for the Elderly



「長者院舍照顧服務券（院舍券）計劃」

計劃特點

01 錢跟人走

增加選擇的靈活性，長者可按需要自由選擇及轉換計劃下的院舍。



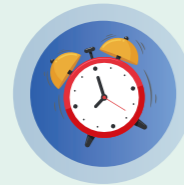
02 能者多付

讓負擔能力較低的長者獲得較多政府資助。



03 縮短輪候時間

長者可在較短時間得到受資助的院舍照顧服務。



04 六個月試用期

長者嘗試適應院舍生活。



參加資格

所有經社會福利署（社署）的安老服務統一評估機制被評為**適合院舍照顧服務**及正在資助長期護理服務中央輪候冊（中央輪候冊）上輪候護理安老宿位的長者。



認可服務機構

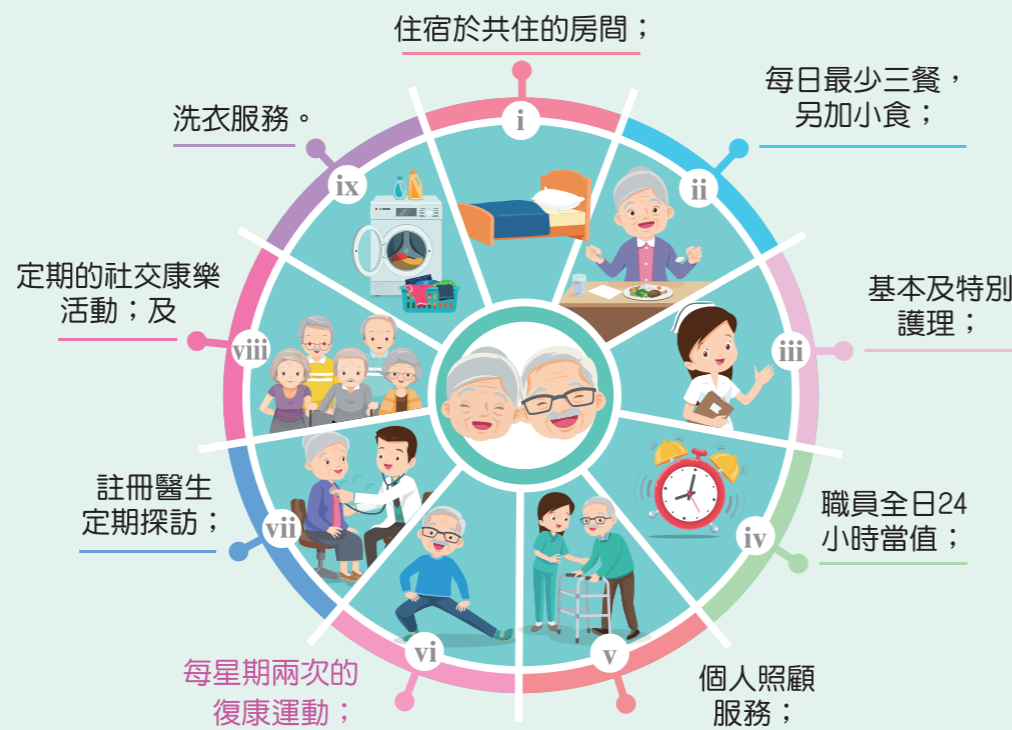
- 認可服務機構（即參與計劃的安老院）必須正在提供非資助宿位，並符合社署規定的空間、人手及過往服務紀錄的指定要求。
- 現時認可服務機構的種類包括：符合資格的津助院舍、合約院舍、非政府機構營辦的自負盈虧院舍、「改善買位計劃」甲一級院舍及其他私營安老院。



社署長者資訊網
www.elderlyinfo.swd.gov.hk

服務範圍

認可服務機構為個別院舍券持有人提供院舍券面值下的「標準服務」如下：



額外付款（可自由選擇）

院舍券持有人可向認可服務機構額外付款以**購買升級或增值服務**，包括：

單人/雙人房寢室、額外物理治療/職業治療節數及針灸等，而額外付款的款額上限為當時院舍券面值的150%。



共同付款安排

院舍券申請人以**個人**為單位接受經濟狀況審查，定出其共同付款級別。八個層遞式共同付款級別如下：

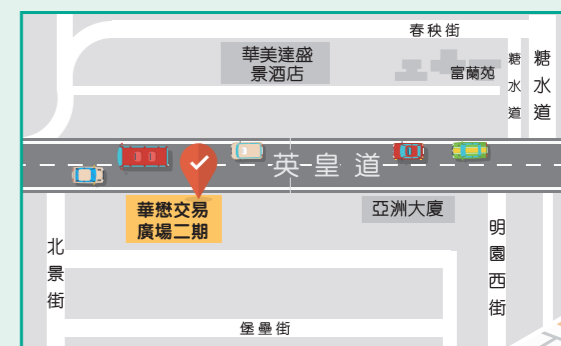
使用者須承擔院舍券面值的共同付款百分比								
級別	0	1	2	3	4	5	6	7
百分比	0%	10%	20%	30%	40%	50%	62.5%	75%

- 如院舍券申請人選擇不接受經濟狀況審查，便須繳付最高共同付款級別（級別7）的付款金額。
- 如符合相關申請資格，院舍券持有人在使用院舍券服務後仍可申領公共福利金，包括長者生活津貼/高齡津貼/普通傷殘津貼。



申請方法

- 社署會向在中央輪候冊新登記的合資格長者發信，邀請他們申請院舍券。
- 合資格的長者可於社署網頁下載申請表格。
- 請將申請表格連同所需文件寄回或交回：香港北角英皇道338號華懋交易廣場2期27樓2701-07室社署院舍照顧服務券辦事處（港鐵北角站B1出口/港鐵炮台山站B出口）。



查詢

- 社署院舍照顧服務券辦事處（電話：3107 3280或3107 3290）（星期一至星期五上午9時30分至下午1時、下午2時30分至下午5時，公眾假期除外）
- 跟進長者長期護理服務的負責工作人員
- 計劃詳情及最新資訊，請瀏覽



社署網頁www.swd.gov.hk
及下載申請表格