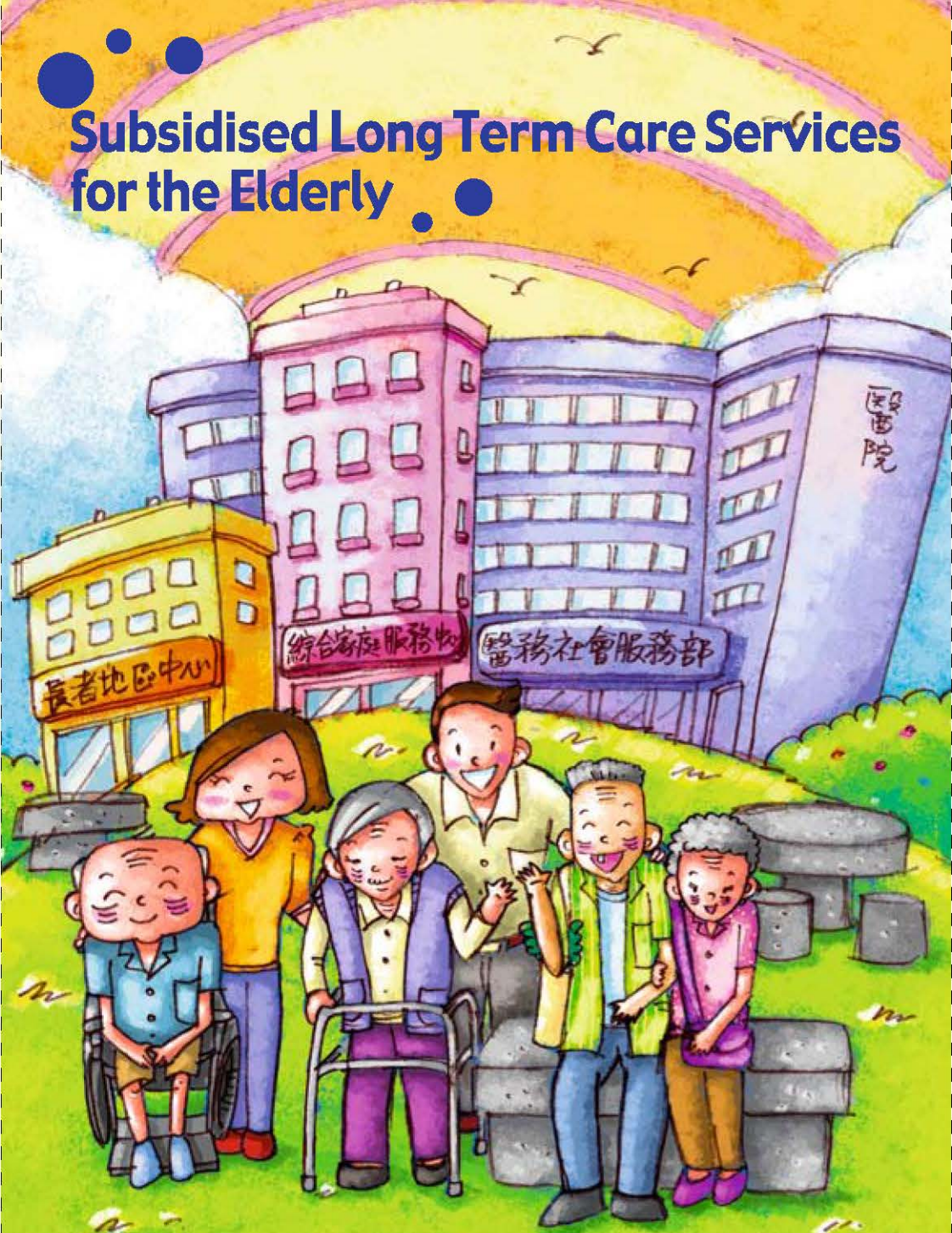



Subsidised Long Term Care Services for the Elderly

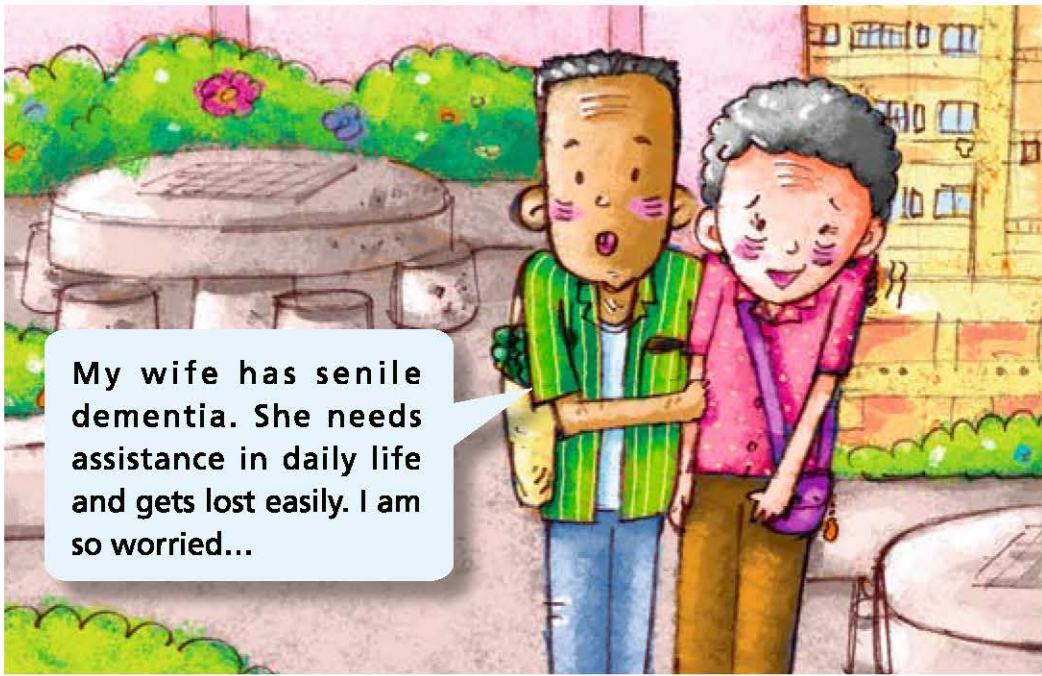


1

Can Subsidised Long Term Care Services help?

An elderly woman with short grey hair, wearing a purple vest over a yellow shirt and purple pants, is using a silver metal walker. She has a sad expression and is looking down. The background shows a doorway and a window with blinds.

I have chronic illnesses and poor mobility, and need to attend medical appointments in someone's company. Can I apply for an aged home placement?


A man in a green and white striped shirt and blue pants is standing next to an elderly woman in a pink shirt and brown pants. The man has a surprised expression, while the woman looks sad. They are in an outdoor setting with a stone table and a building in the background.

My wife has senile dementia. She needs assistance in daily life and gets lost easily. I am so worried...




2

How to apply for Long Term Care Services?

An illustration of a caregiver, a young man with glasses and a yellow shirt, assisting an elderly man with a blue shirt. The elderly man is using a silver walker. They are in a home setting with a doorway leading to a bedroom with a bed and a bathroom with a toilet and shower. A pink armchair is visible on the right.

At the time of application, the responsible worker will arrange **Standardised Care Need Assessment** for you. Your health condition, living environment and support network will be assessed thoroughly by an accredited assessor through home visit and interview.

If the assessment results indicate that you have long term care needs, the responsible worker will work out a care plan and apply for suitable **Long Term Care Services** for you. Application for service and arrangement of assessment are both **free of charge**.



Subsidised long term care services can be classified into **Residential Care Services** and **Community Care Services**:

Residential Care Services (i.e. **Care and Attention Homes** and **Nursing Homes**): These are suitable for elders who cannot be adequately taken care of at home for reasons of health, lack of support, etc. Appropriate type of residential care services will be recommended for you by the assessment results based on your care needs.

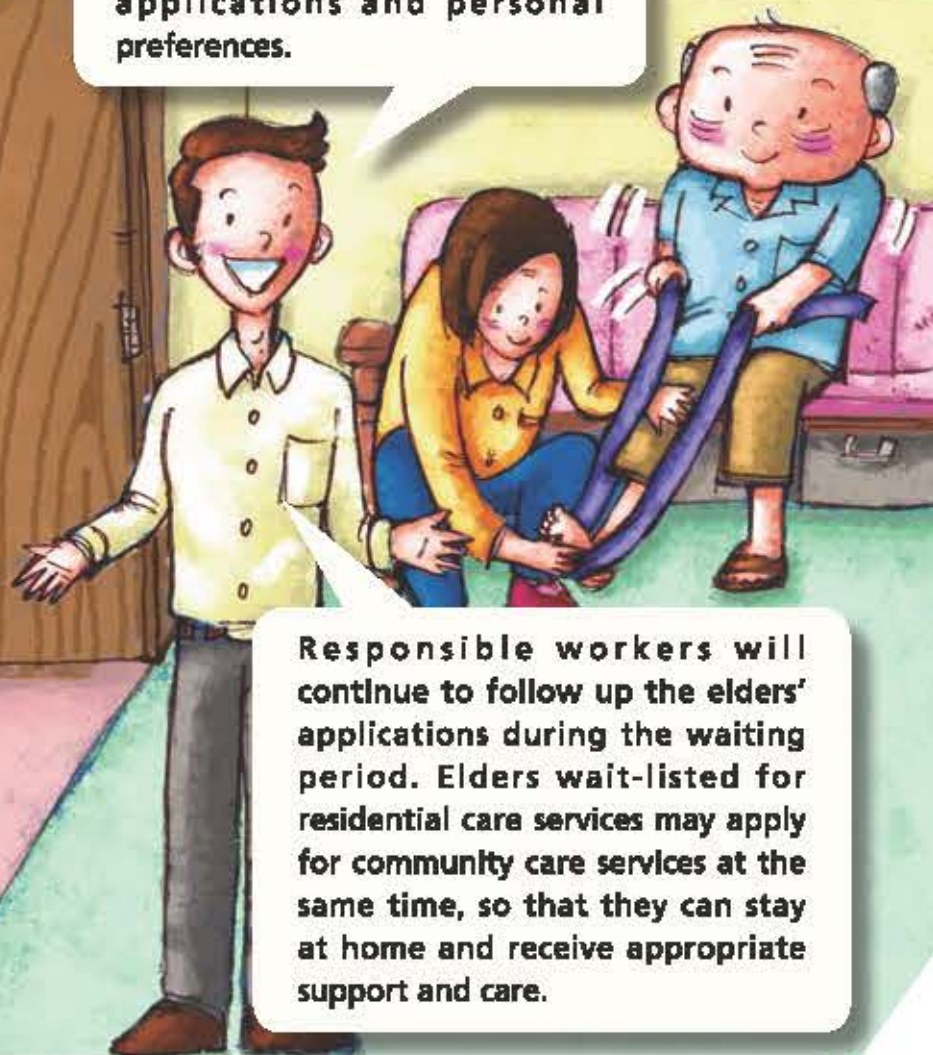


Community Care Services:

Elders assessed to be suitable for **Community Care Services**, they can attend **Day Care Centres for the Elderly** in the neighbourhood for care services, or stay at home and receive personal care services delivered by **Home-based Services Teams**, e.g. bathing, rehabilitation exercise, medication management, escort services, meal delivery, etc.



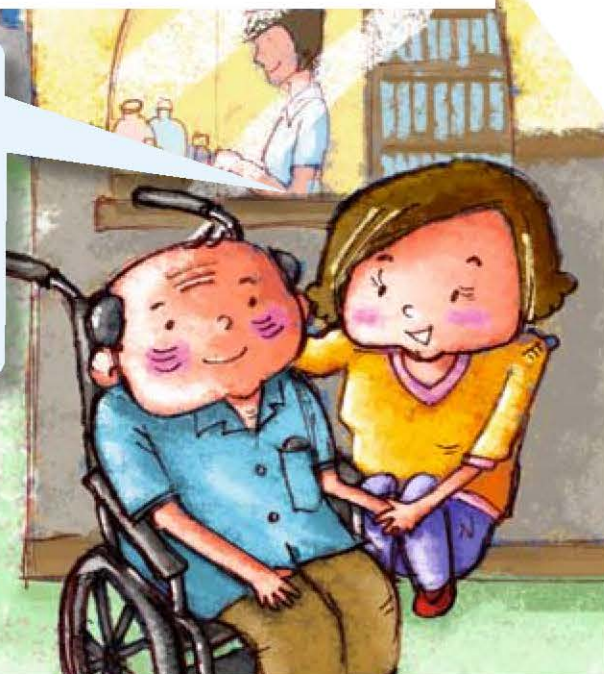
Social Welfare Department will process the applications for long term care services through **Central Waiting List** and allocate services to the elders according to the order of their applications and personal preferences.



Responsible workers will continue to follow up the elders' applications during the waiting period. Elders wait-listed for residential care services may apply for community care services at the same time, so that they can stay at home and receive appropriate support and care.



My father had a stroke recently. He gets a poor memory and has to use a wheelchair now. As I have to work away from home, can anyone help take care of him?



Don't worry. You can contact social workers of **Integrated Family Service Centres, Medical Social Services Units of Public Hospitals, District Elderly Community Centres**, etc and make a request for **Long Term Care Services** for the elderly.



Telephone numbers, fax numbers and email addresses of Standardised Care Need Assessment Management Offices (Elderly Services) are as follows:

Hong Kong

Standardised Care Need Assessment Management Office (Elderly Services) (Hong Kong)

(Service areas: Central, Western and Islands District, Eastern and Wanchai District, Southern District)

Tel No: 2546 7491 Fax No: 2543 7495

Email address: scnamoesshkenq@swd.gov.hk

East Kowloon

Standardised Care Need Assessment Management Office (Elderly Services) (East Kowloon)

(Service areas: Kwun Tong District, Wong Tai Sin and Sai Kung District)

Tel No: 2350 4116 Fax No: 2320 2644

Email address: scnamoesekenq@swd.gov.hk

West Kowloon

Standardised Care Need Assessment Management Office (Elderly Services) (West Kowloon)

(Service areas: Kowloon City and Yau Tsim Mong District, Sham Shui Po District)

Tel No: 2399 2356 Fax No: 2390 2459

Email address: scnamoeswkenq@swd.gov.hk

New Territories East

Standardised Care Need Assessment Management Office (Elderly Services) (New Territories East)

(Service areas: Shatin District, Tai Po and North District, Yuen Long District)

Tel No: 2607 1215 Fax No: 2699 7846

Email address: scnamoesnteenq@swd.gov.hk

New Territories West

Standardised Care Need Assessment Management Office (Elderly Services) (New Territories West)

(Service areas: Tsuen Wan and Kwai Tsing District, Tuen Mun District)

Tel No: 2439 4754 Fax No: 2439 0175

Email address: scnamoesntwenq@swd.gov.hk

Social Welfare Department Hotline: 2343 2255

Social Welfare Department Website: <http://www.swd.gov.hk>

Home > Public Services > Services for the Elderly